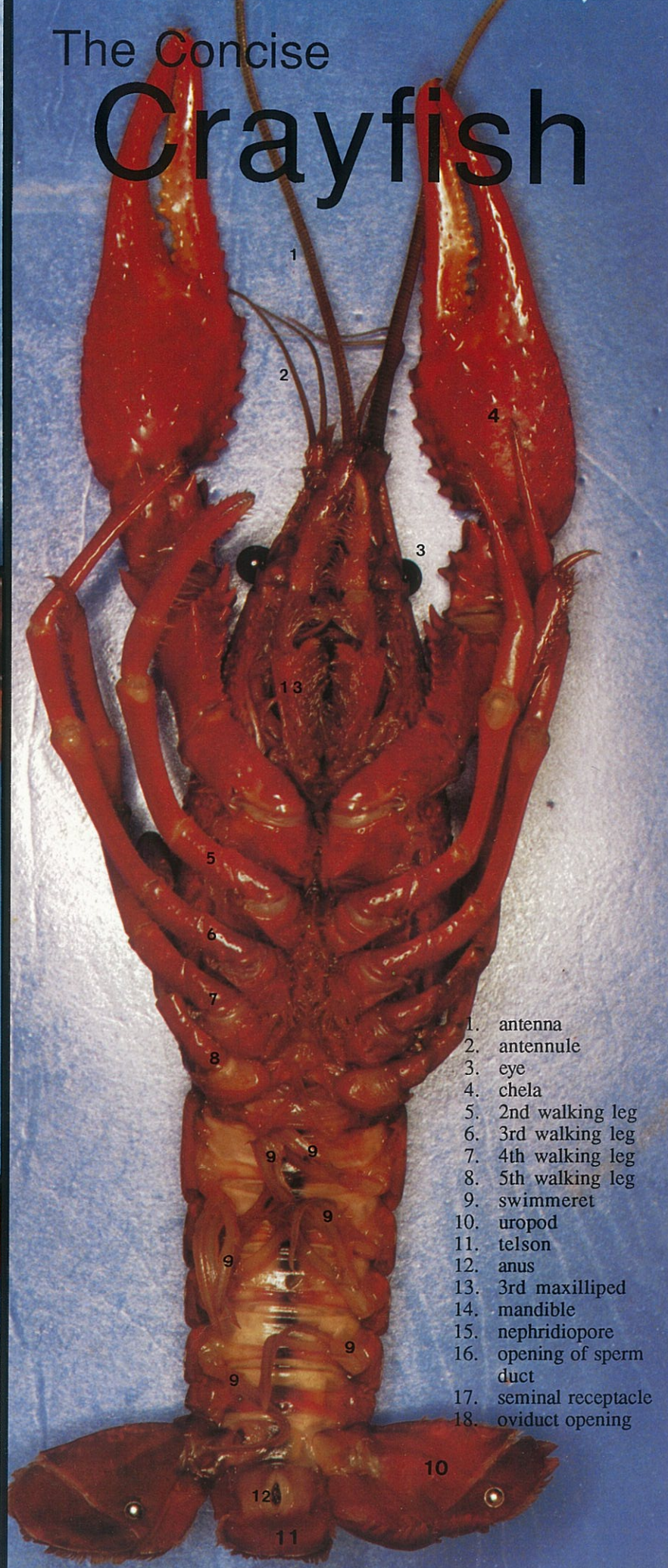
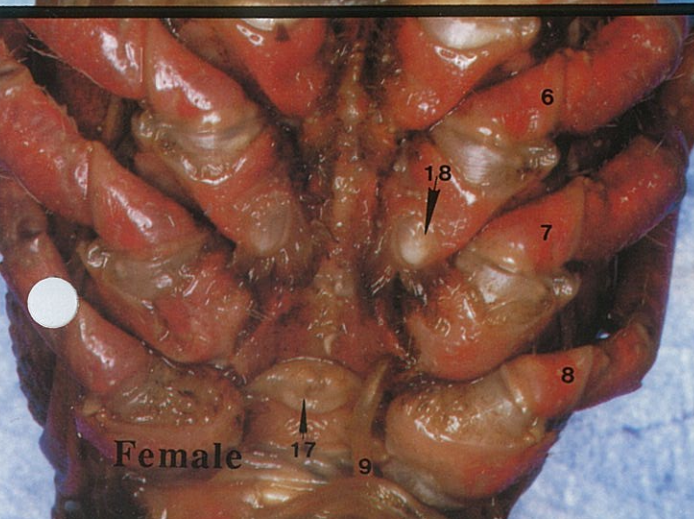


# The Concise Crayfish



- 1. antenna
- 2. antennule
- 3. eye
- 4. chela
- 5. 2nd walking leg
- 6. 3rd walking leg
- 7. 4th walking leg
- 8. 5th walking leg
- 9. swimmeret
- 10. uropod
- 11. telson
- 12. anus
- 13. 3rd maxilliped
- 14. mandible
- 15. nephridiopore
- 16. opening of sperm duct
- 17. seminal receptacle
- 18. oviduct opening





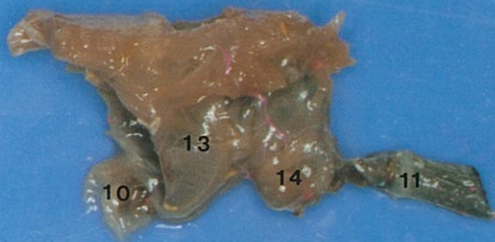
1. stomach
2. mandibular adductor m.
3. digestive gland
4. heart (red on injected specimens)
5. extensor m. of thorax
6. gills
7. cerebral ganglion (brain)
8. nerve
9. green gland
10. esophagus
11. intestine
12. flexor m. of thorax
13. cardiac stomach
14. pyloric stomach
15. teeth
16. ovary
17. testis
18. sperm duct
19. flexor m. of abdomen
20. ventral nerve cord & ventral abdominal artery (injected red)
21. anus

**BioCam  
Communications Inc.**

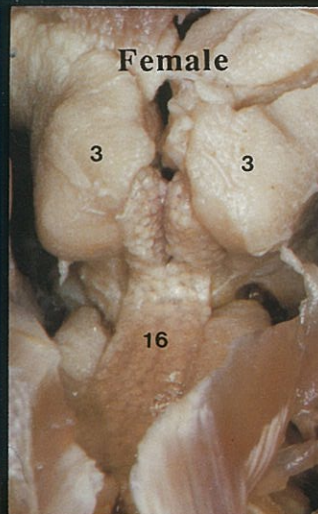
Box 8110-12  
Blaine, WA 98230  
U.S.A.

Box 417, Sta. A.  
Kelowna, B.C.  
Canada V1Y 7N8

Lateral View of Stomach



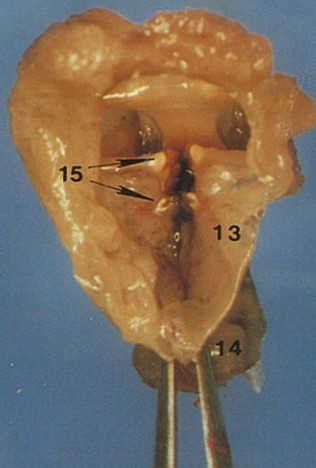
Female



Tail - Ventral View



Dissected Stomach  
View of Gastric Mill



Male

