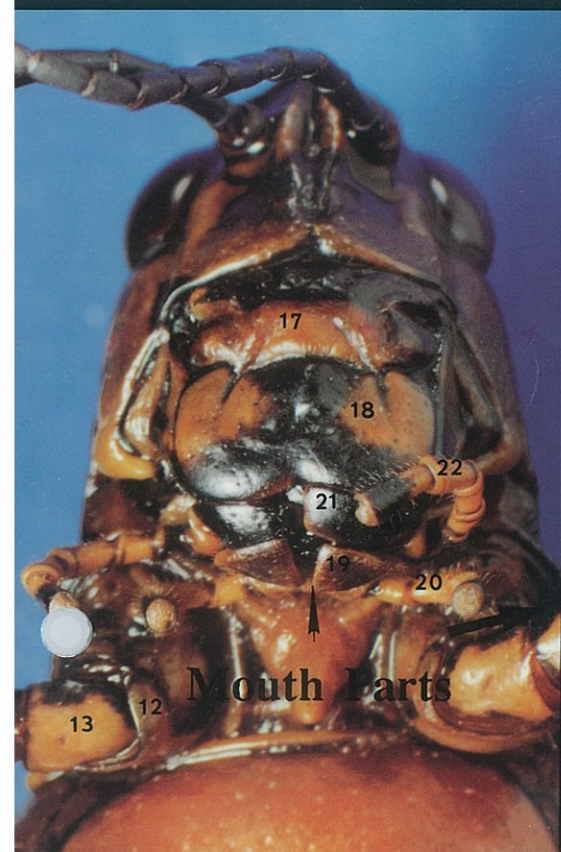




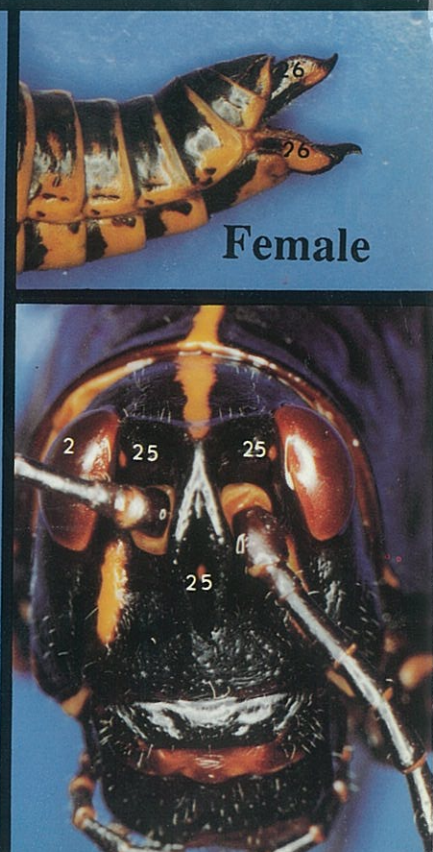
Male

The Concise Grasshopper

- | | | |
|-----------------|----------------|--------------------|
| 1. head | 10. abdomen | 19. labium |
| 2. compound eye | 11. spiracle | 20. labial palp |
| 3. antenna | 12. coxa | 21. maxilla |
| 4. prothorax | 13. trochanter | 22. maxillary palp |
| 5. mesothorax | 14. femur | 23. mandible |
| 6. metathorax | 15. tibia | 24. hypopharynx |
| 7. fore wing | 16. tarsus | 25. ocellus |
| 8. hind wing | 17. clypeus | 26. ovipositor |
| 9. tympanum | 18. labrum | |



Mouth Parts



Female



1. Body Opened



2. Gonads Removed



3. Close-up of Digestive Tract



4. Digestive Tract Removed

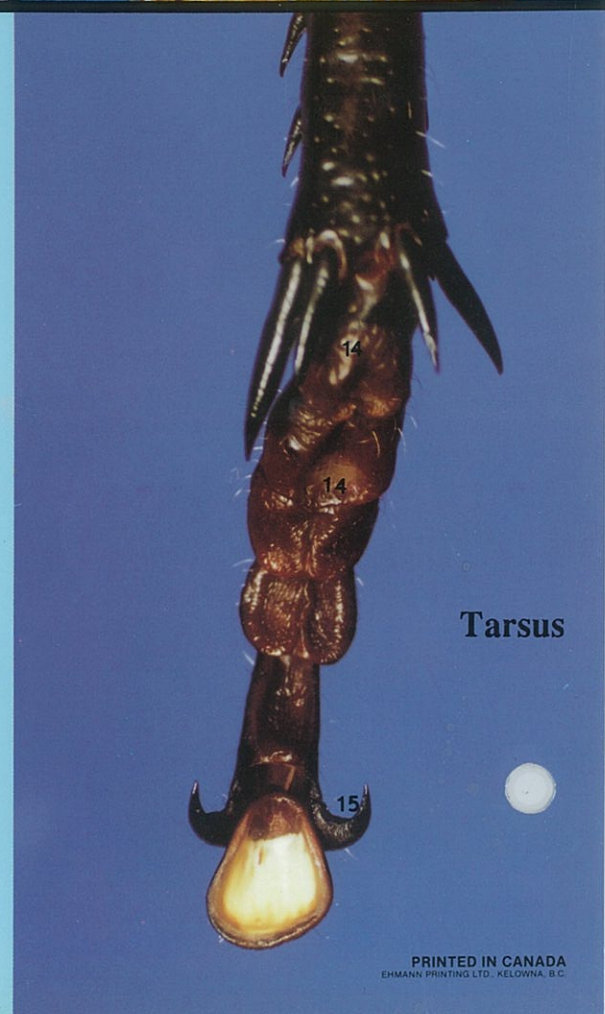
1. eggs in ovary
2. ovipositor
3. testis
4. esophagus
5. crop
6. gastric caeca
7. stomach
8. intestine
9. malpighian tubules
10. tracheal tube
11. internal opening to spiracle
12. ganglion
13. nerve cord
14. tarsus
15. claw

copyright © 1989 by Gordon Peachey

BioCam Communications Inc.

2318 Second Ave.
Seattle, WA 98121

Box 417 Station A
Kelowna, B.C. V1Y 7N8



Tarsus