

## SCIENCE SAFETY RULES AND PROCEDURES

### For Secondary Science (not a conclusive list)

1. Read all directions before starting an experiment.
2. Safety considerations in the science classroom demand responsible behaviour at all times.
3. Know the location of safety equipment.
4. Always alert the teacher in case of any accident.
5. If a chemical reagent comes in contact with the skin rinse off immediately with large amounts of cold water for at least 5 minutes.  
**Please note** that a concentrated acid spill should be wiped off first and then the area can be flushed thoroughly with water.
6. If any foreign substance enters the eye, rinse the eye immediately for 15 minutes.
7. If you wear contact lenses, notify the teacher. Some activities may require you to remove contact lenses.
8. When instructed, wear safety goggles and protective clothing.
9. Wear closed shoes during laboratory sessions.
10. Long hair should be tied back.
11. Do not use cracked or chipped laboratory glassware.
12. Chemicals are to be used in the lab only.
13. Take only as much chemical as needed and never return excess chemicals to the original container.
14. Dispose of chemicals as directed by your teacher.
15. Bottles should never be held by the neck.
16. Taste nothing unless you are instructed to do so.
17. Never eat or drink in the science classroom.
18. Never enter the chemical storeroom without permission.
19. Always clean off bench and sink after completion of an experiment.

At the end of the laboratory session wash your hands thoroughly with warm water and soap.

Name: \_\_\_\_\_ Date: \_\_\_\_\_ Block: \_\_\_\_\_

## Laboratory Safety

This is a list of safety equipment that you will find in the science classroom and the science hallway. Complete the chart by indicating where you would find the equipment, when you would use it and how you would use it.

| Safety Equipment       | Location? (closest) | When to use it | How to use it |
|------------------------|---------------------|----------------|---------------|
| Broken glass container |                     |                |               |
| Eye wash               |                     |                |               |
| Fire extinguisher      |                     |                |               |
| Fire alarm             |                     |                |               |
| Fire blanket           |                     |                |               |
| First aid kit          |                     |                |               |
| Garbage                |                     |                |               |
| Fumehood               |                     |                |               |
| Shower                 |                     |                |               |
| Sand                   |                     |                |               |

---

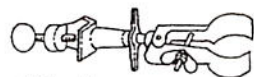
# Laboratory Equipment and Skills

---

In the chemistry laboratory, you will be using equipment, handling materials, and performing certain unfamiliar tasks. The purpose of this section is to introduce you to the equipment and to describe some of the skills you will be required to use in this laboratory course. A few of the "dos" and "don'ts" necessary for safe and effective laboratory work also are included.

## Recognizing Lab Equipment

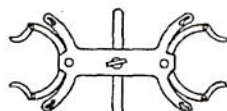
The equipment you will be using most frequently in the laboratory is illustrated in Figure 1. Study this figure carefully and familiarize yourself with each item.



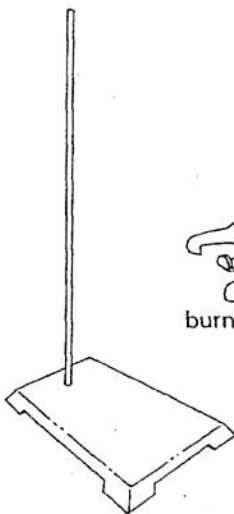
utility clamp



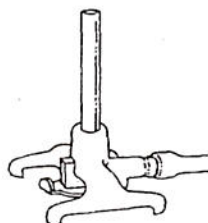
iron ring



buret clamp



ring stand



burner



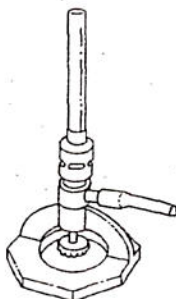
clay triangle



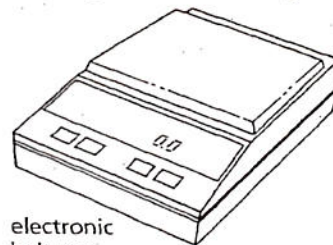
wire gauze



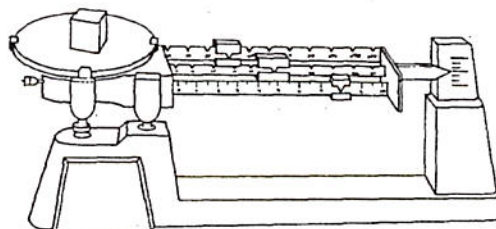
wing tip



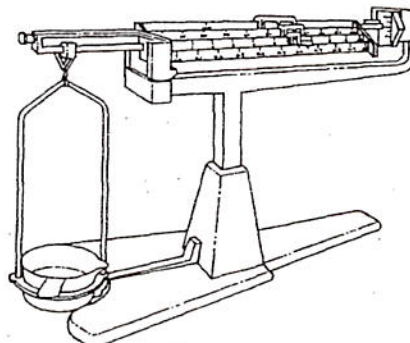
burner



electronic balance



beam balance



beam balance

Figure 1 Laboratory equipment.

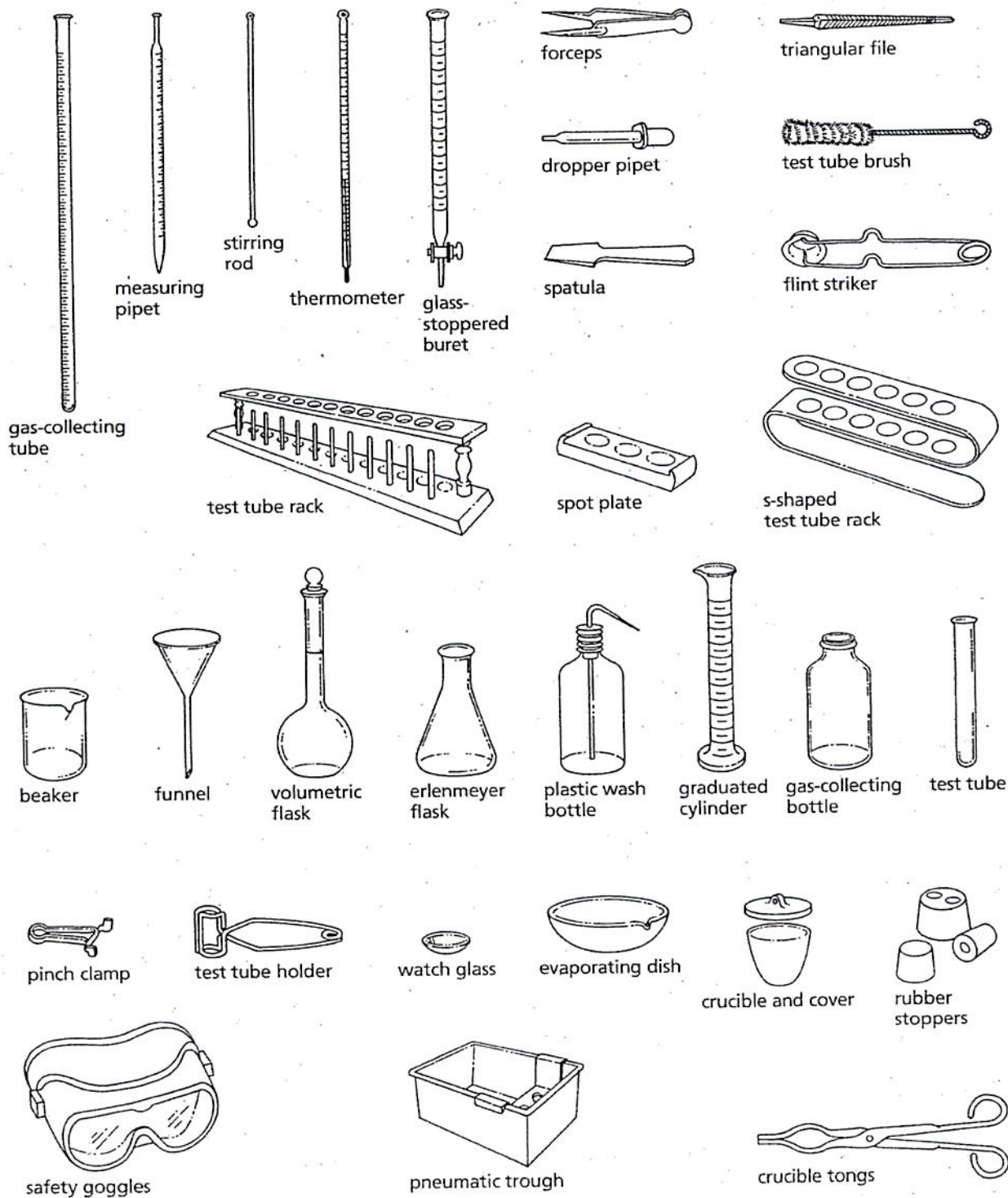


Figure 1, continued

Name: \_\_\_\_\_ Date: \_\_\_\_\_ Block: \_\_\_\_\_

## Common Laboratory Equipment

- Label/name each of the following pieces of lab equipment in the space provided

