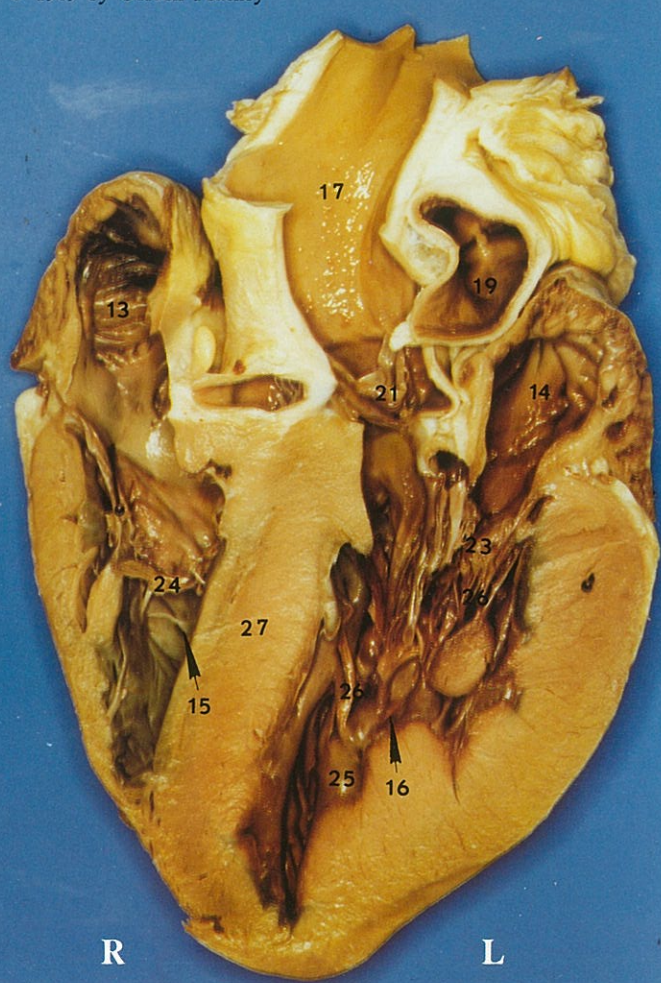
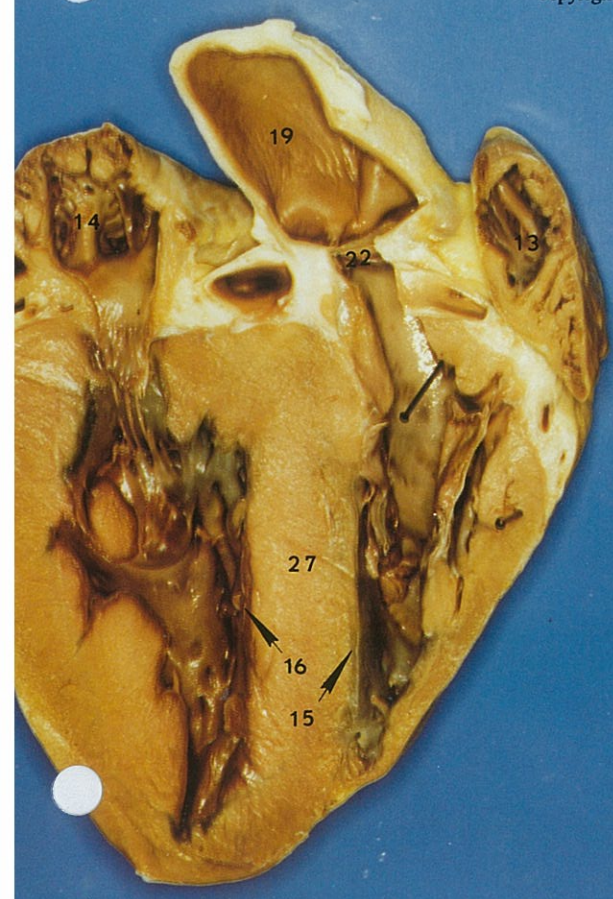


Brain - Cross Section Through Pituitary Gland

Heart - Anterior View

The Concise
 Sheep Pig
Brain/Heart

copyright © 1989 by Gordon Peachey

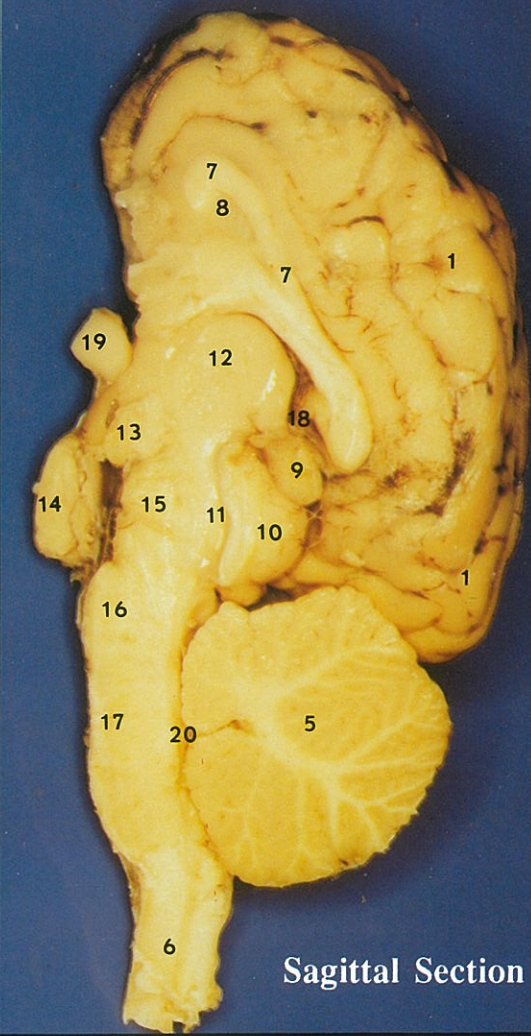


- BRAIN**
1. gyrus
 2. sulcus
 3. longitudinal fissure
 4. corpus callosum
 5. lateral ventricle
 6. hippocampus
 7. third ventricle
 8. thalamus
 9. hypothalamus
 10. mamillary body
 11. pituitary gland
 12. cerebrum
- HEART**
13. right atrium
 14. left atrium
 15. right ventricle
 16. left ventricle
 17. aorta
 18. left coronary artery
 19. pulmonary artery
 20. superior vena cava
 21. aortic semilunar valve
 22. pulmonary semi-lunar valve
 23. bicuspid (mitral) valve
 24. tricuspid valve
 25. papillary muscle
 26. chordae tendineae
 27. interventricular septum

L R R L



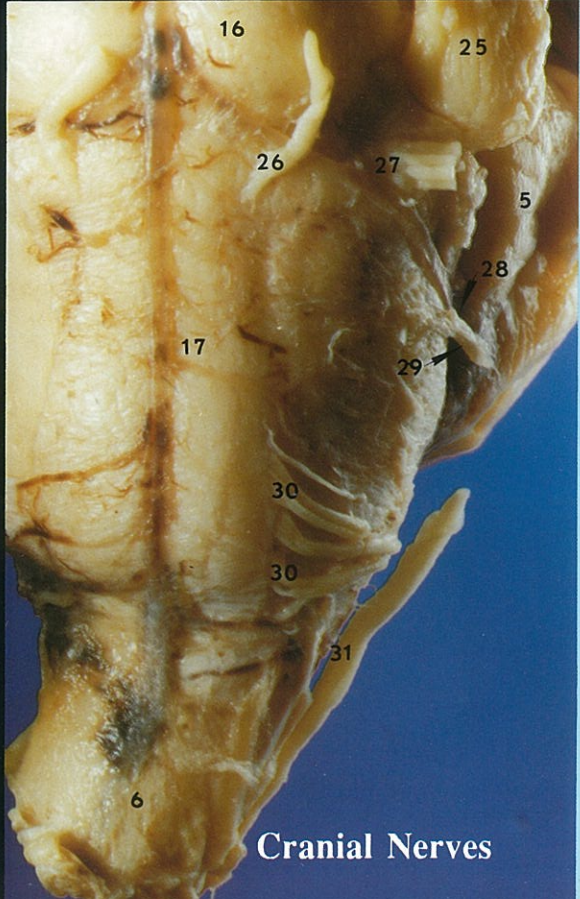
Superior (dorsal) Surface



Sagittal Section



Inferior (ventral) Surface



Cranial Nerves

BRAIN

- 1. cerebral cortex
- 2. longitudinal fissure
- 3. gyrus
- 4. sulcus
- 5. cerebellum
- 6. spinal cord
- 7. corpus callosum
- 8. septum pellucidum (lateral ventricle is behind this)
- 9. pineal gland
- 10. superior colliculus
- 11. cerebral aqueduct
- 12. thalamus
- 13. hypothalamus
- 14. pituitary gland
- 15. midbrain
- 16. pons
- 17. medulla oblongata
- 18. third ventricle
- 19. optic nerve
- 20. fourth ventricle
- 21. olfactory bulb
- 22. olfactory tract I
- 23. optic chiasma II
- 24. oculomotor n. III
- 25. trigeminal n. V
- 26. abducens n. VI
- 27. facial n. VII
- 28. glossopharyngeal n. IX
- 29. vagus n. X
- 30. hypoglossal n. XII
- 31. spinal accessory n. XI

BioCam Communications Inc.
 PMB 12, 250 H St.
 Blaine, WA 98230
 U.S.A.
 Box 417 PBC
 Kelowna, B.C.
 Canada V1Y 7N8
 www.biocam.com
 Copyright © 1989
 by Gordon Peachey